

**Kingmax 2.5" SATAIII
SMG Series
Solid State Drives(SSD)
Firmware Update Tool Guide**

Date	Version	Revision History	Note
2014 04/30	Ver 1.0	First Released	
2014 07/11	Ver 1.1	F/W M1009 Update to N0324	
2014 07/18	Ver 1.2	F/W N0324 Update to N0711	
2014 09/24	Ver 1.3	F/W N0711 Update to N0911	

1. Operating system requirements:

1.1 SMG Series SSD firmware update supports OS: Windows XP / Windows 7 / Windows 8.

1.2 When using windows XP updates, please check the setting of BIOS SATA mode

1.2.1 If the default of BIOS SATA mode is IDE mode, please have the SSD well set up and then to process the update (Remark: IDE mode does not support hot-plug function)

1.2.2 If the default of BIOS SATA mode is AHCI mode, please follow the instruction for firmware update in Step 2 below.

1.3 It is suggested to have the AHCI switched on in BIOS if you are using Windows 7 /Windows 8

1.4 SMG series SSD firmware update supports installation in both used as a boot disk or a storage disk.

NOTES:

1. The data in the SSD will be erased during the installation of the firmware update.

Please back-up your data before installation

2 Please make sure the power is uninterrupted during firmware update.

If using notebook, please use AC adaptor to avoid the failure that may caused by the condition of low power.

3. Please remove the program of IRST (Intel® Rapid Storage Technology) and please must use the SSD as a system disk to enable the process of firmware update

4. After the firmware update is completed, you can download the Intel IRST software and install it again if you world need it.


2. Instruction for firmware update

2.1 Please go to the KINGMAX official website to download the software of SSD firmware update

Example: SMG series mapped as follows:

Download Center- Firmware Update

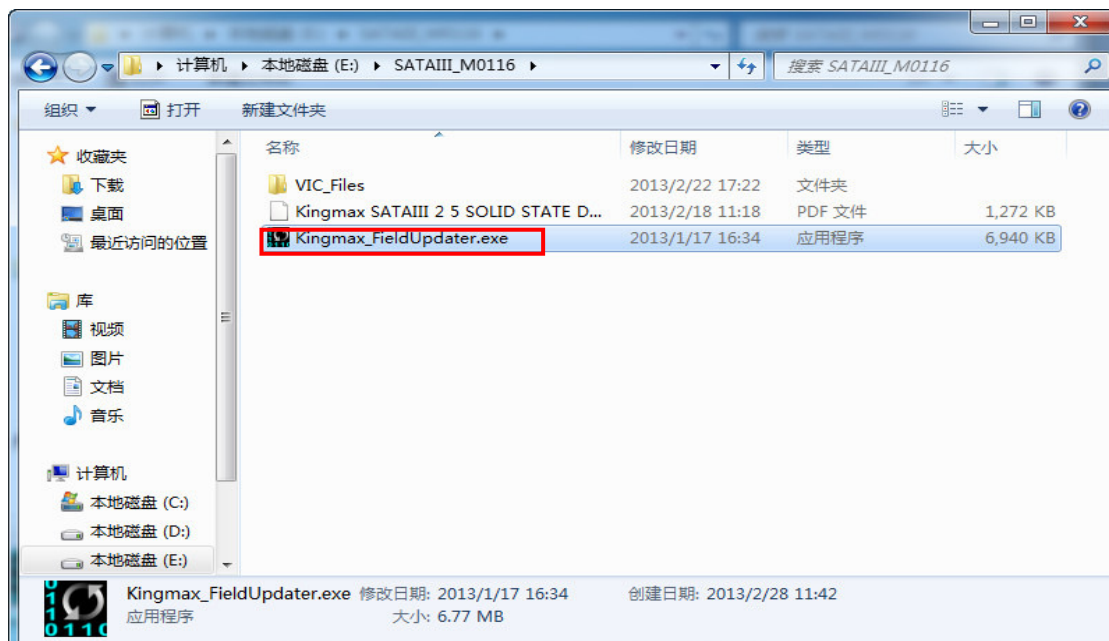
Please Select ... Search

Type	Update	Download
【User Manual】 KINGMAX SATAIII Field Update Tool for SMG Series (FW version N0911)	2014.09.24	
SATAIII Field Update Tool for SMG Series (FW version: N0911)	2014.09.24	
【User Manual】 KINGMAX SATAIII Field Update Tool for SMU Series (FW version: N0911)	2014.09.24	
SATAIII Field Update Tool for SMU Series (FW version: N0911)	2014.09.24	
【User Manual】 KINGMAX SATAIII Field Update Tool for SMP Series (FW version: N0911)	2014.09.24	
SATAIII Field Update Tool for SMP Series (FW version: N0911)	2014.09.24	
KINGMAX SATA II SSD Firmware Update Tool_20130709	2014.04.09	

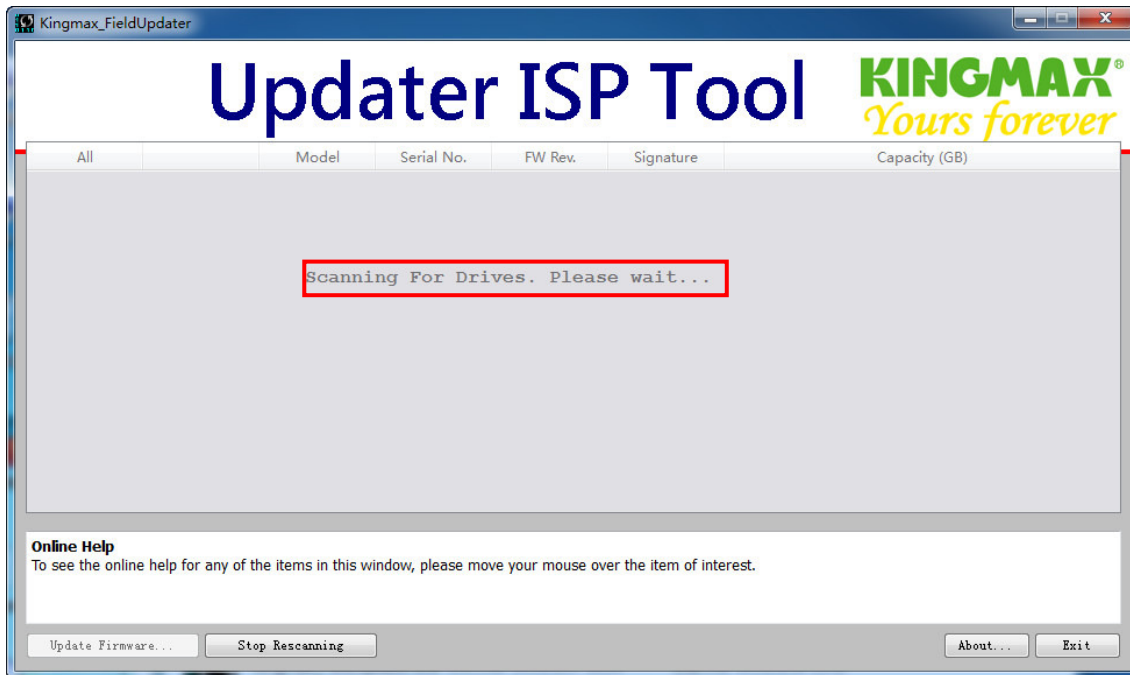
KINGMAX official website as follows:

<http://www.kingmax.com/zh-tw/productdownload/downloadcenter/index/Firmware/0/page1>

2.2 Please process the firmware update with the file “Kingmax_FieldUpdater.exe”



2.3 Scanning for Drives. Please wait...



2.4 after few moments, the system will scan the SSD, as shown below:



*** If you wait over three minutes, still do not see an icon SSD, please re-plug the SSD, go back to step 2.2 and try again.**

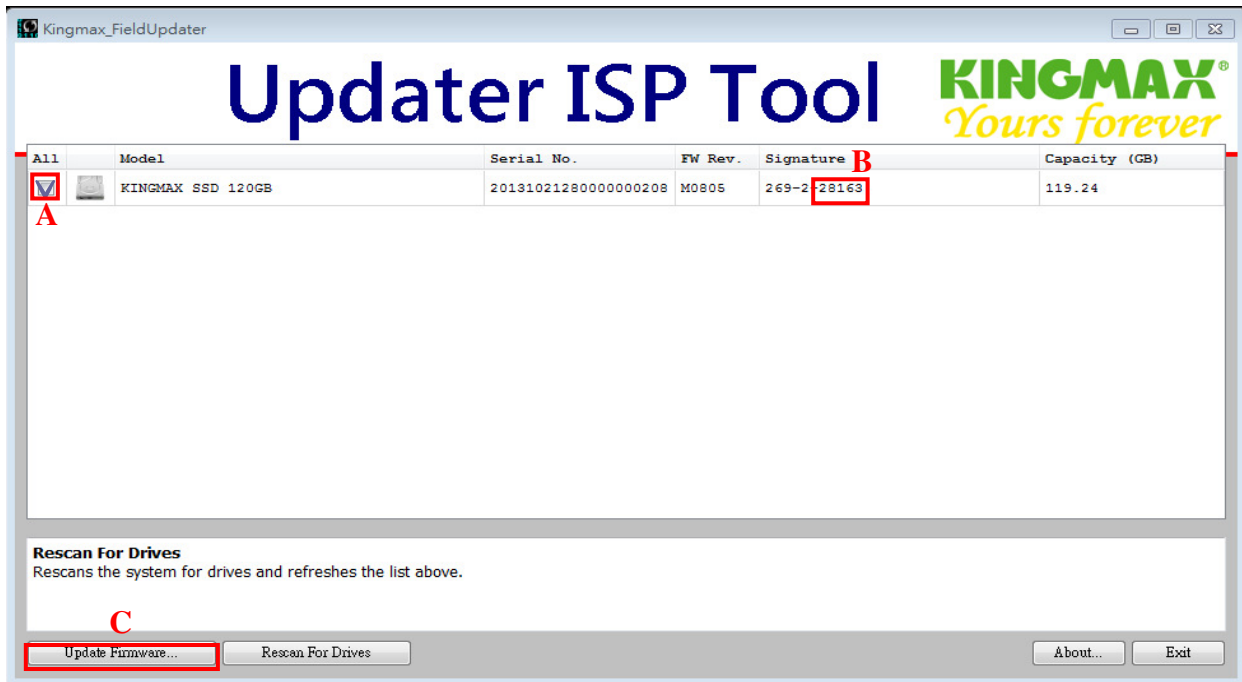
2.5 Make settings with to the following steps (A ~ E).

A. Please click v.

B. Please note the B sample ConfigID: "28163"

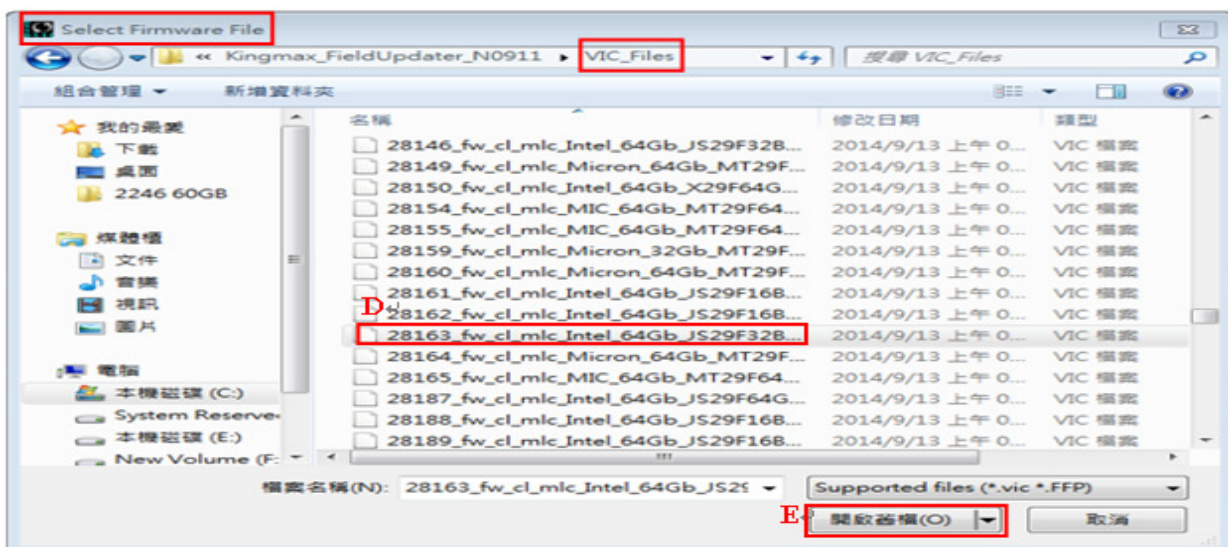
(Remark: Please note the ConfigID will be varied with different product types)

C Click on "Update Firmware" button, Select Firmware File dialog box.

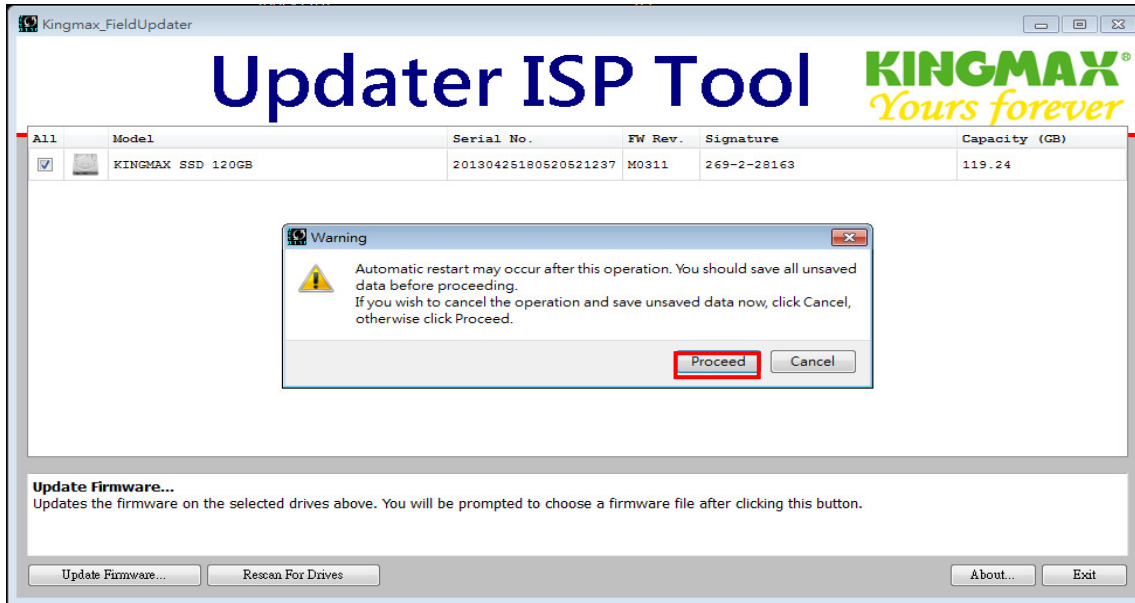


D Go into the Select Firmware File from VIC_Files folder, select the sample ConfigID: "28163" Vic file.

E Select "Open" button.



2.6 Please make sure all your data is well back-up before you process the "Proceed" button.



2.7 It will go to the status of Firmware updating and the functioning buttons are irresponsible.

Please wait for several minutes and then you will see the green "v" for update is completed.



2.8 Firmware update has been completed.



2.9 Select "Rescan For Drives" button to rescan SSD to confirm the firmware has been updated to the latest version.

